



231

ELECTRONIC SELF-TESTING LEVEL SWITCH ALARM AND BLOCK FOR MAXIMUM LEVEL

Compliant Directive 2014/68/UE (PED) - certified B+D



DIN

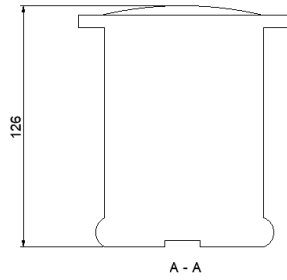


Panel

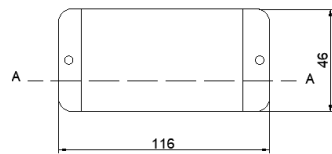
TECHNICAL CHARACTERISTICS

- safety integrity level: **SIL2/SIL3**
- electronic working, microcontroller
- double conductivity measure circuit, with compensation electrode
- 6 different self testing , every 60”
- output - relay: two contacts in exchange, 230V – 2.5A-AC1
- positive –safety circuit burner block
- alarm codes: numeric display
- minimum water conductivity: 0.5 µS/cm
- manual test switches: standard
- power consumption: 3VA
- DIN rail/panel mounting

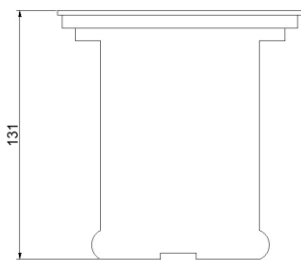
MECHANICAL DIMENSION



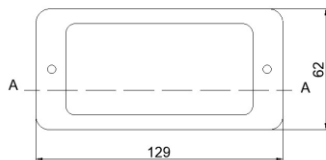
A - A



DIN

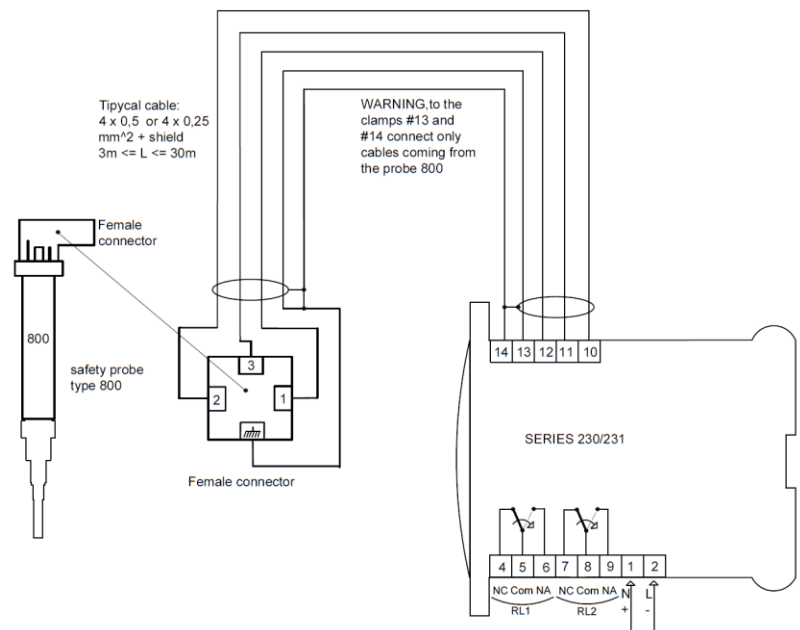


A - A



panel

WIRING DIAGRAM



ORDERING CODES

CODICE	CHARACTERISTICS	POWER SUPPLY (+10%÷-15%)
231-110-0X	DIN - SIL2 - Conductivity >10 µS/cm	X =8 (110 ÷ 230Vac)
231-210-0X	DIN - SIL3 - Conductivity >10 µS/cm	X =8 (110 ÷ 230Vac) - X =9 (24Vac); (24Vdc)
231-110-1X	panel - SIL2 - Conductivity >10 µS/cm	X =8 (110 ÷ 230Vac)
231-210-1X	panel - SIL3 - Conductivity >10 µS/cm	X =8 (110 ÷ 230Vac) - X =9 (24Vac); (24Vdc)
999-200-01	conductivity modification: 0.5÷20 µS/cm	